

# Employee Ratings from 2012-2018

Rita Savill

EPPS 6356

# Project Details

- Payscale<sub>1</sub> and Payscale<sub>2</sub> studies
- Analysis of employee ratings for six global companies (Amazon, Apple, Facebook, Google, Microsoft, Netflix)
- Time series: 2012-2018
- Static visuals and one animated visual

# Data

Data set created by Kaggle user Peter Sunga, “Google, Amazon and more Employee Reviews”<sub>3</sub>

Variables Used:

- Company
- Dates
- Overall rating
- Rating of competitive benefits
- Rating of work-life balance
- Rating of career opportunities
- Rating of company culture/values
- Rating of senior management

Cleaning and initial inspection done in Microsoft Excel.

Manipulation and visualization done in Tableau.

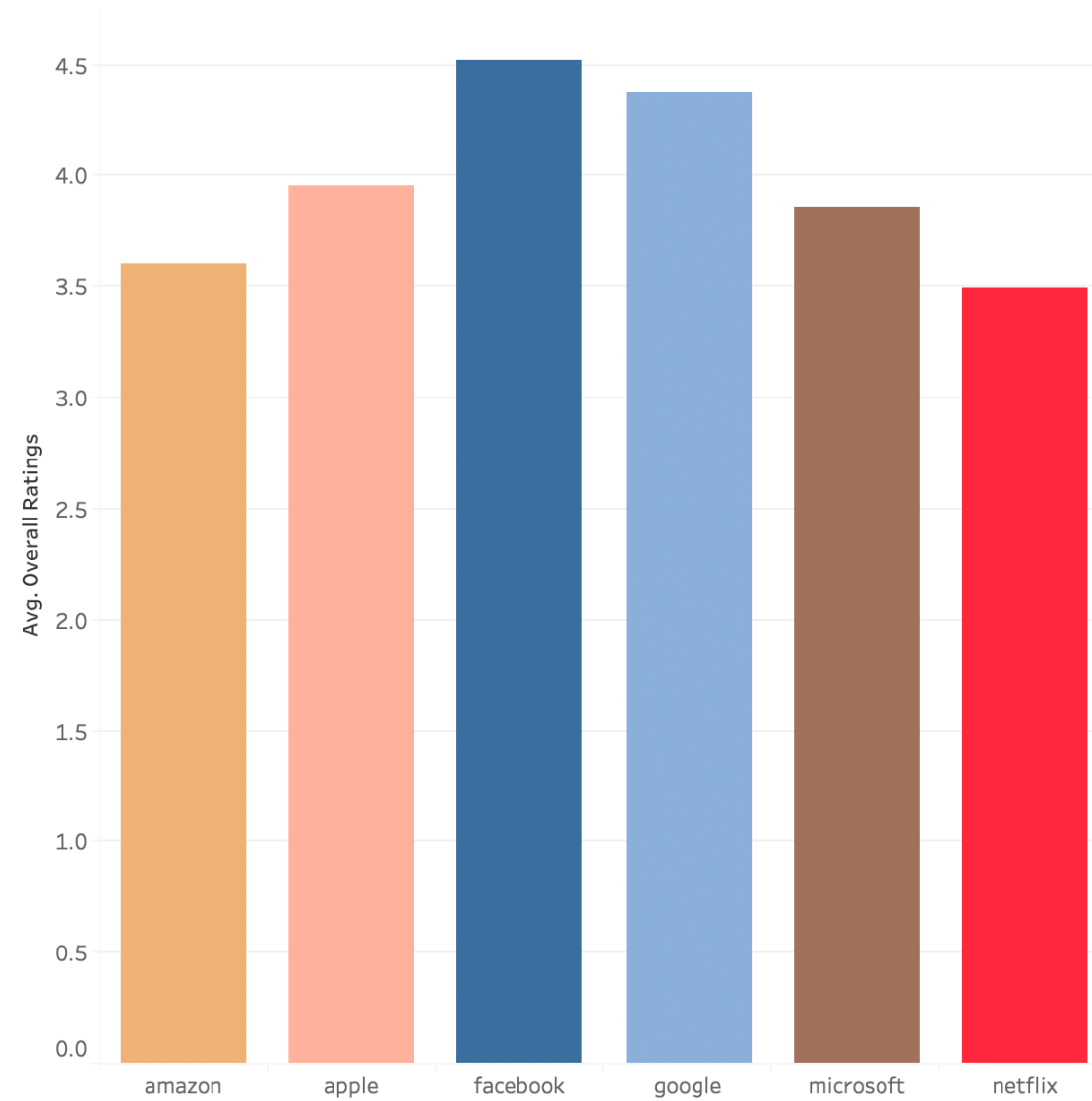
Animation recorded by Giphy Capture.

# Tableau

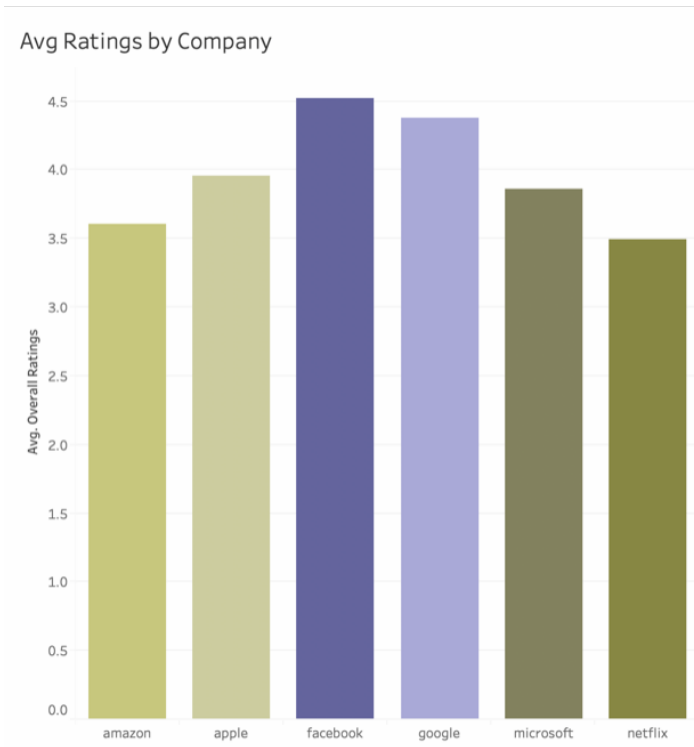
- User-friendly..no coding required!
- Highly customizable
- Interactive visuals
- Excellent design features
- A plethora of online resources



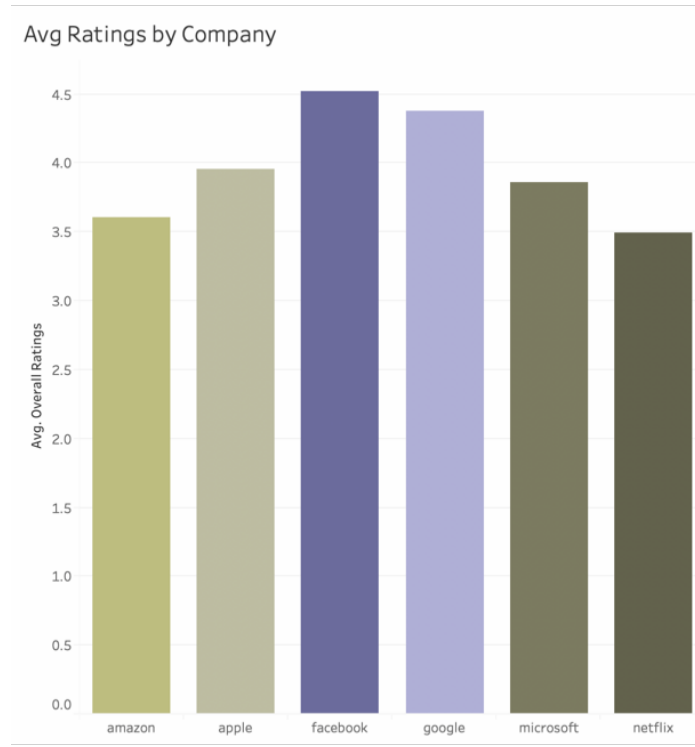
Avg Ratings by Company



# Color Blind Friendly



Deuteranopia

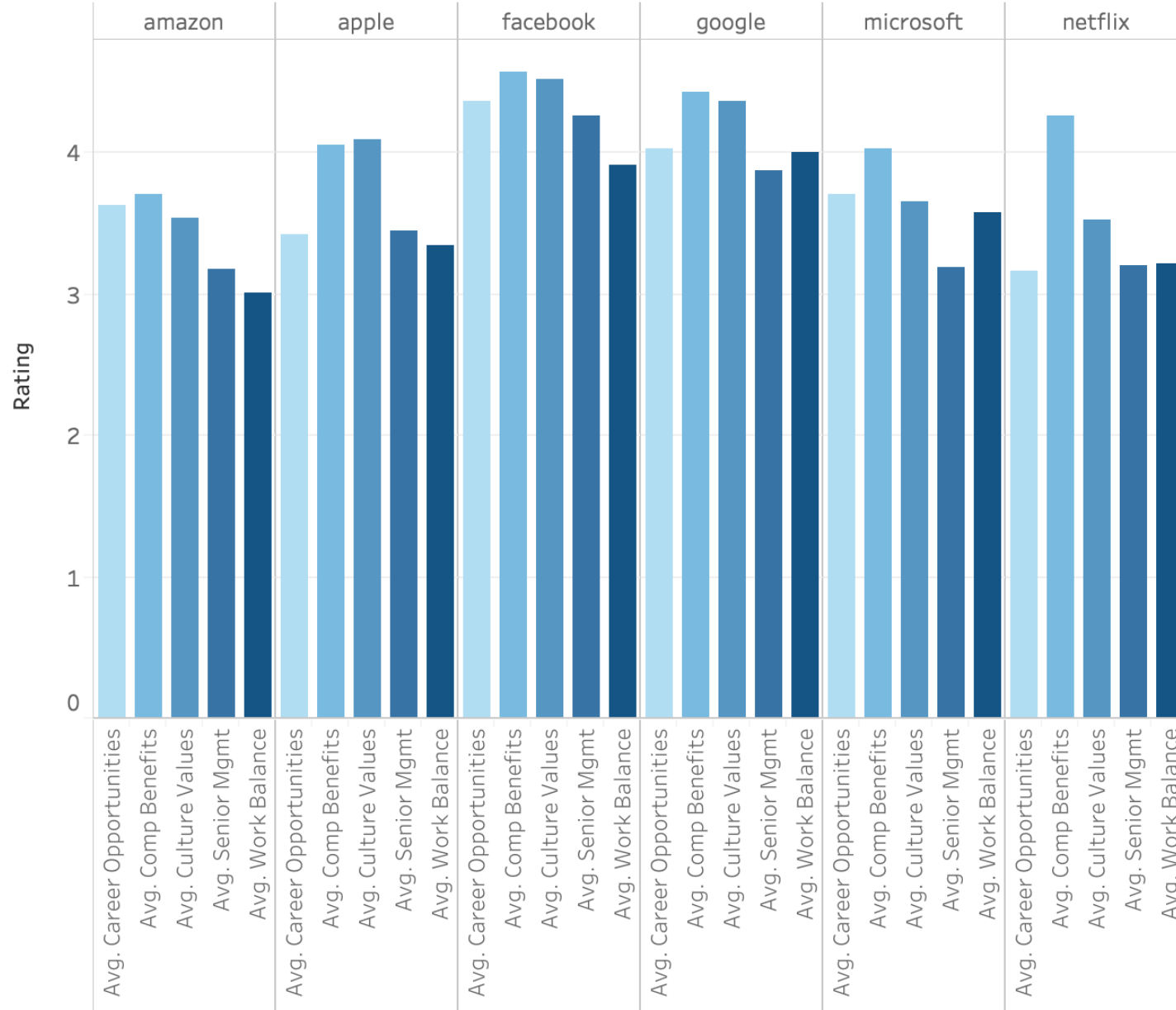


Protanopia

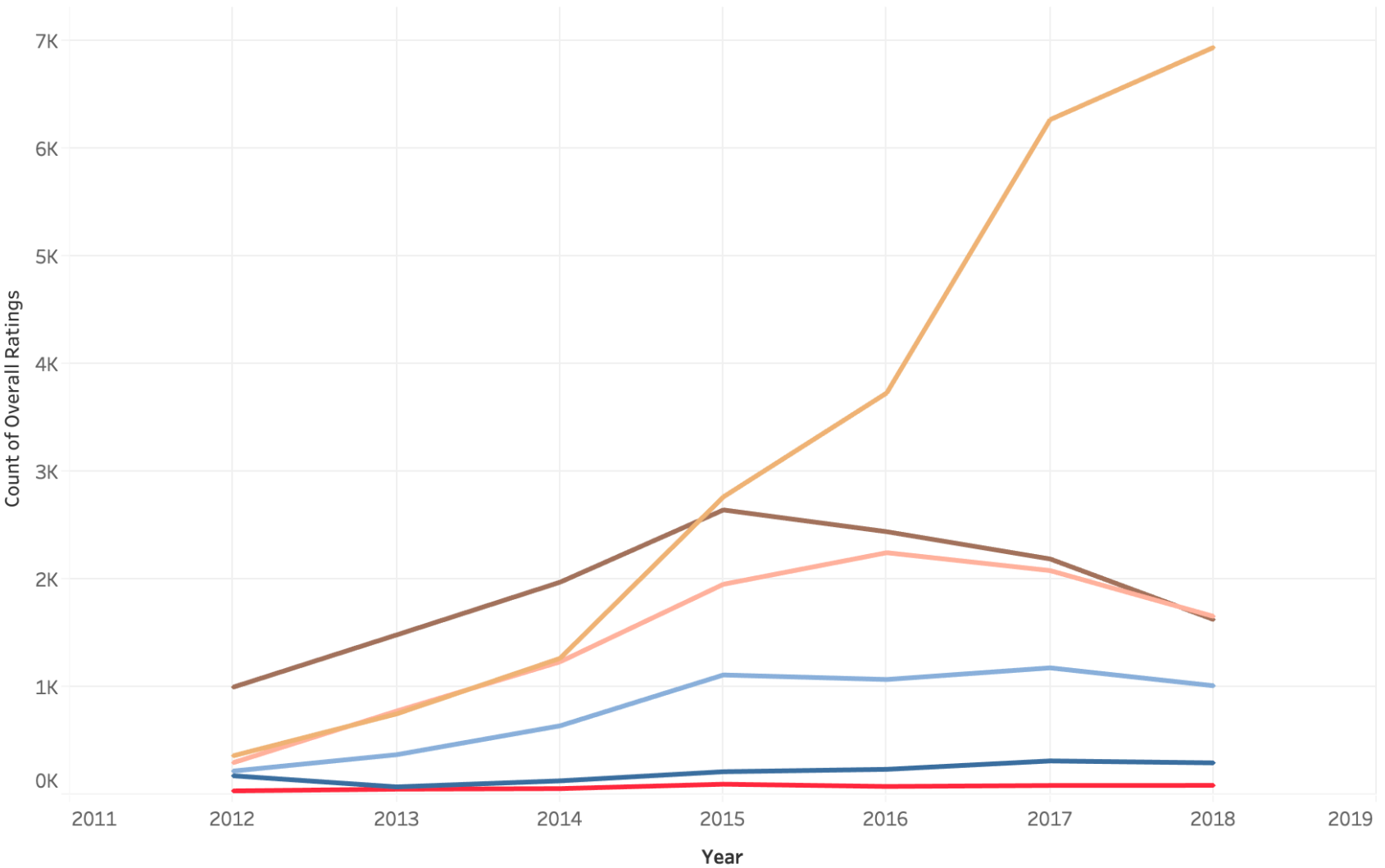


Tritanopia

# Categorical Ratings by Company



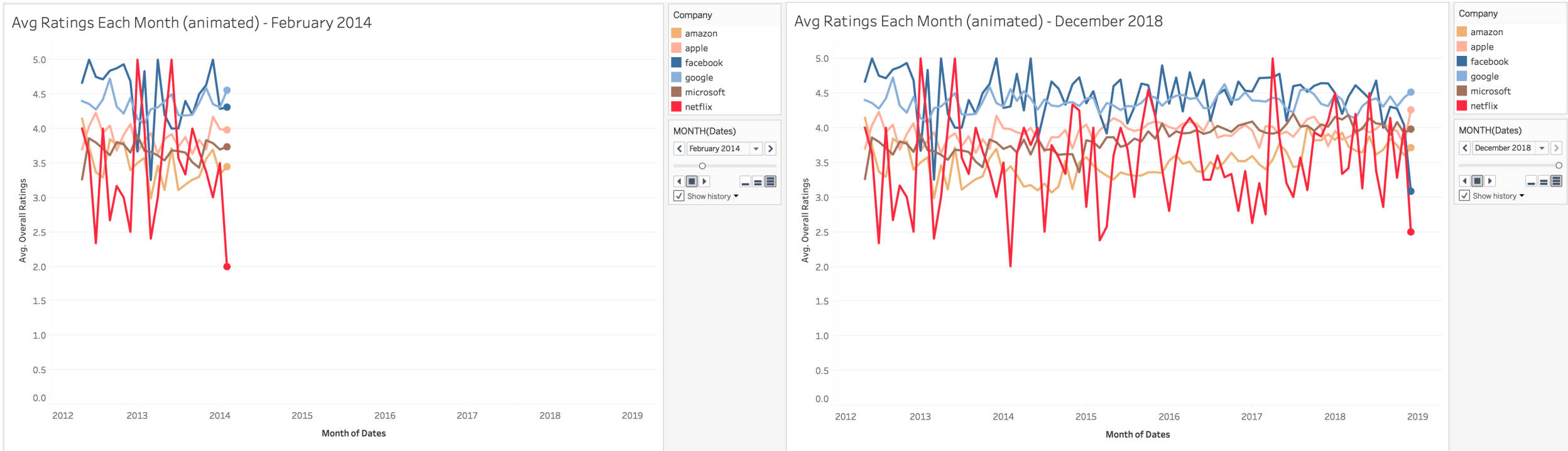
Count Over Time



- Company
- amazon
  - apple
  - facebook
  - google
  - microsoft
  - netflix



# Animation in Tableau



# References

- 1 <https://www.paysa.com/blog/the-top-talent-of-tech-disruptors-and-titans/>
- 2 <https://www.payscale.com/data-packages/top-tech-companies-compared/tech-salaries>
- 3 <https://www.kaggle.com/petersunga/google-amazon-facebook-employee-reviews>